

WS-TIMER version 6.01



WS-TIMER is a Shareware program; registration is only \$10.00USD. Read the REGISTER.WRI if you want to register by mail. You can also register by credit card by sending CREDIT.WRI by FAX or E-Mail. My E-Mail address is laube@sentex.net and my FAX number is (519) 893-7110. The cost of credit card registration is \$12.00USD. You can also register on-line using your credit card, just check my home page for more details and a special web form. You may freely distribute WS-TIMER, as long as all files from the archive are included.

Home Page: <http://www.sentex.net/~laube>

***** LIMITED WARRANTY *****

THIS PROGRAM IS PROVIDED ON AN "AS IS" BASIS WITHOUT WARRANTY OF ANY KIND, EXPRESSED OR IMPLIED, INCLUDING BUT NOT LIMITED TO THE IMPLIED WARRANTIES OF MERCHANTABILITY AND FITNESS FOR A PARTICULAR PURPOSE. THE ENTIRE RISK AS TO QUALITY AND PERFORMANCE OF THESE PROGRAMS IS WITH YOU. SHOULD THE PROGRAM PROVE DEFECTIVE, YOU (NOT INTER-TIME TECHNOLOGIES) ASSUME THE ENTIRE COST OF ALL NECESSARY REPAIR, SERVICING, OR CORRECTION. IN NO EVENT WILL INTER-TIME TECHNOLOGIES BE LIABLE TO YOU FOR ANY DAMAGES, INCLUDING ANY LOST PROFITS, LOST SAVINGS, OR OTHER INCIDENTAL OR CONSEQUENTIAL DAMAGES ARISING OUT OF THE USE OR INABILITY TO USE THESE PROGRAMS, EVEN IF LOU'S SOFTWARE HAS BEEN ADVISED OF THE POSSIBILITY OF SUCH

DAMAGES. THIS WARRANTY GIVES YOU SPECIFIC LEGAL RIGHTS, AND YOU MAY ALSO HAVE OTHER RIGHTS WHICH VARY FROM PROVINCE TO PROVINCE OR STATE TO STATE. SOME STATES DO NOT ALLOW THE EXCLUSION OF IMPLIED WARRANTIES OR EXCLUSION OF LIABILITY FOR INCIDENTAL OR CONSEQUENTIAL DAMAGES SO THE ABOVE MAY NOT APPLY TO YOU. YOU ACKNOWLEDGE THAT YOU HAVE READ THIS AGREEMENT, UNDERSTAND IT, AND AGREE TO BE BOUND BY ITS TERMS AND CONDITIONS. YOU FURTHER AGREE THAT IT IS THE COMPLETE AND EXCLUSIVE STATEMENT OF THE AGREEMENT BETWEEN US, WHICH SUPERSEDES ANY PROPOSAL OR PRIOR AGREEMENT, ORAL OR WRITTEN, AND ANY OTHER COMMUNICATIONS BETWEEN US.

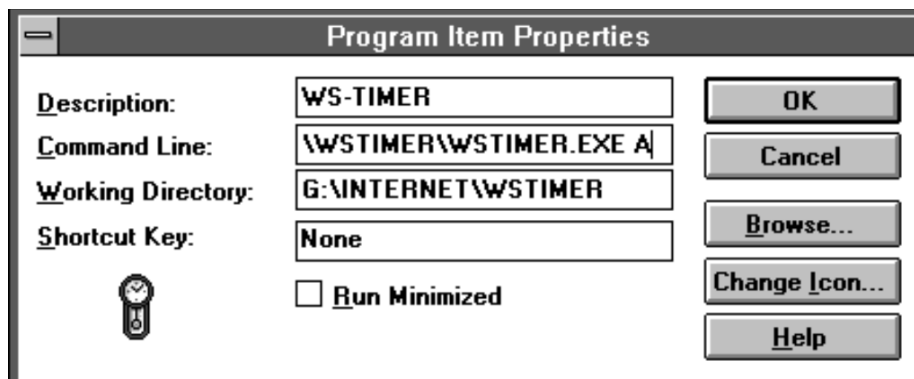
WS-TIMER is a small application that will help you keep track of your time on-line. WS-TIMER is written to keep track of on-line time for people paying variable period rates. At the beginning of each period the period timer will be reset to zero. The time from the previous period will be recorded in a file called "HISTORY?.TXT" that you will find in the directory that you installed WS-TIMER. Also a daily history file will be created each day by the name DAYHIST?.TXT, this will help those who have maximum daily rates. These files can be viewed from WS-TIMER.

Note: HISTORY?.TXT log file will not be created until the beginning of the following period.

WS-TIMER also keeps a log of your daily time in the file DAYHIST?.TXT and also keeps a log of each sessions in the file SESSION?.TXT.

Note: DAYHIST?.TXT will not be created until the first logon on the following day of your first connection.

Note: The question mark in each file name represents a variable based on the letter of the provider you have currently selected. By default when WS-TIMER is installed it sets this provider to the letter 'A'. To change this default choice you can set the property of the icon's command line. To do this, highlight the WS-TIMER icon from program manager, then click on File followed by Properties. This will bring up the Program Item Properties box. At the end of the Command Line change the letter to whatever you want.

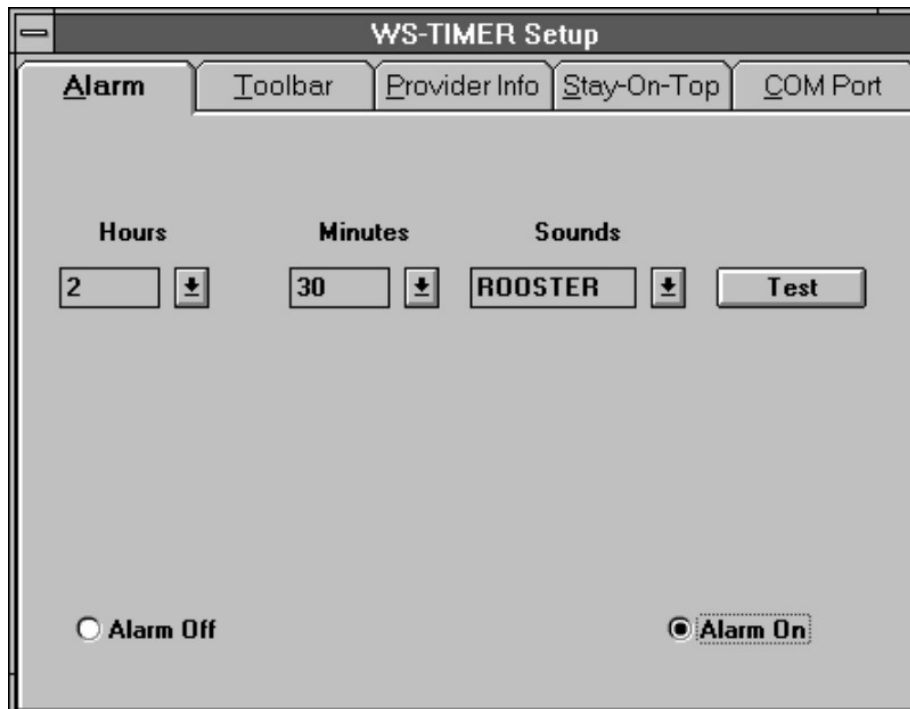


Setting-Up WS-TIMER

Alarm

The first time you run WS-TIMER you will have to enter all required data for each setup option. To do so click on File then Setup and another window with multiple tab will come up. The first one as you see below is for the Alarm. Select the number of hours, minutes and select a sound file. WS-TIMER looks in it's own directory for the sound files. At the time of installation WS-TIMER copied two wave files to it's own directory (alarm.wav and rooster.wav). You can use any .wav files you want for the alarm but they must be placed in the WS-TIMER directory. Click on the Alrm On or Off button.

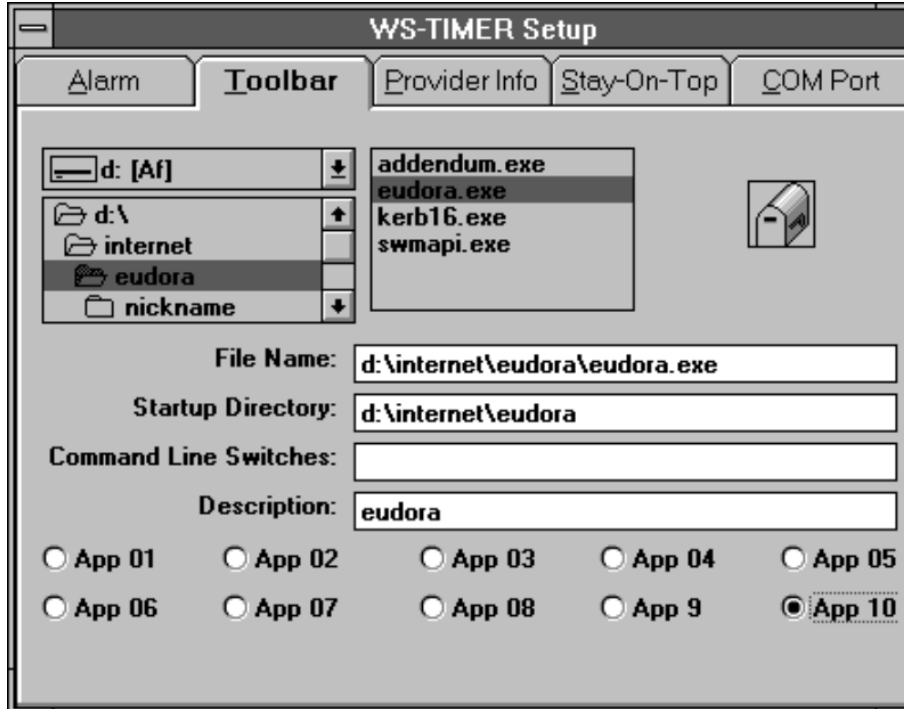
If you select the Alarm On button you need to select a sound file. If you neglect to select a sound file WS-TIMER will warn you when you exit the Setup window. The alarm is based on the time of the current call's time and will sound at the amount of hours and minutes from the current call.



Toolbar

Setting up the toolbar is very simple. Click on the radio button of the app you want to select. Then choose the drive where the application was installed, followed with the directory and then click on the executable in the file list box. The setup will automatically insert the File Name, Startup Directory and Description fields. If the application requires special command line switches they can be entered in the appropriate box. You can also change the Description to what ever you want. This is the Description that will appear whenever the mouse passes over the icon in the WS-TIMER main window. By default

WS-TIMER uses the executables file name.



Provider Information

The Provider Info is the single most important setup for WS-TIMER. The date you enter here must be later than that of the current date, since WS-TIMER is looking for the next starting date of your period. In the length box enter the number of days in your period or 99 if you are on a monthly period.

If your provider starts a new day at midnight then select the Minight box.

WS-TIMER Setup

Alarm Toolbar **Provider Info** Stay-On-Top COM Port

The date you need to enter here is the starting date of your provider's next period.

Year Please enter the year with four digits. ie. for 1995 enter 1995

Month Please enter the month in numerical. ie. for July enter 7

Day Please enter the day in decimal. ie. for the 1st enter 1

Length Please enter the number of days in period or 99 if period is monthly

Midnight Check this box if your provider starts a new session while logged on at the turn of midnight

Stay-On-Top

The Stay-On-Top setup tells WS-TIMER which time you would like displayed in a small topmost window. During the setup you can place the window anywhere you want on the screen and the location will be saved when you close the setup box. You have four choices here:

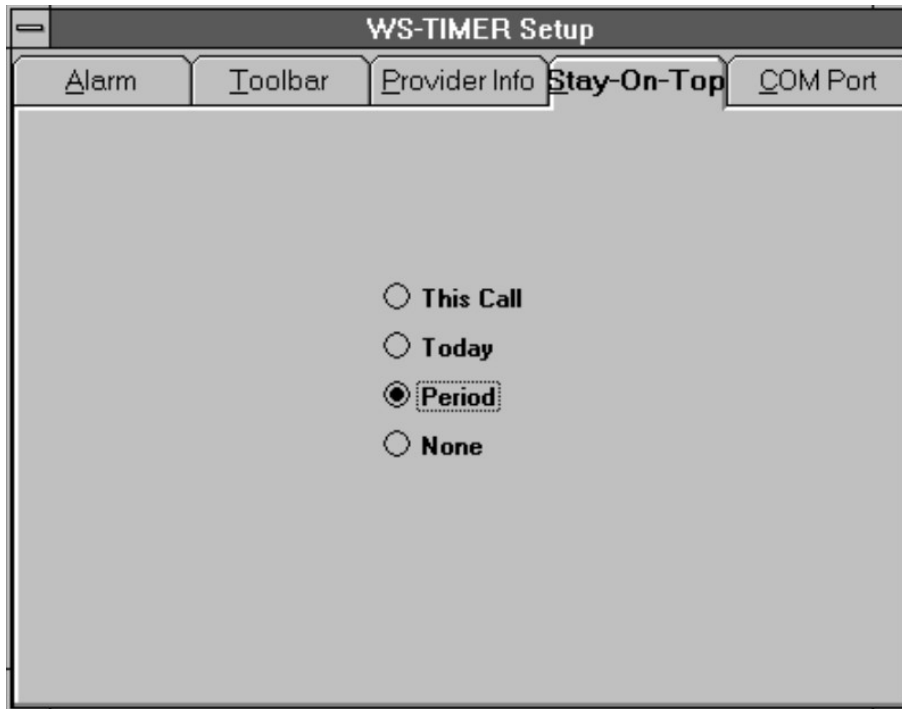
This Call: represents the accumulated time for the current call.

Today: represents the accumulated time for the current day.

Note: On your first logon of a day the accumulated time displayed in the Today window will be identical to the one displayed in the This Call window.

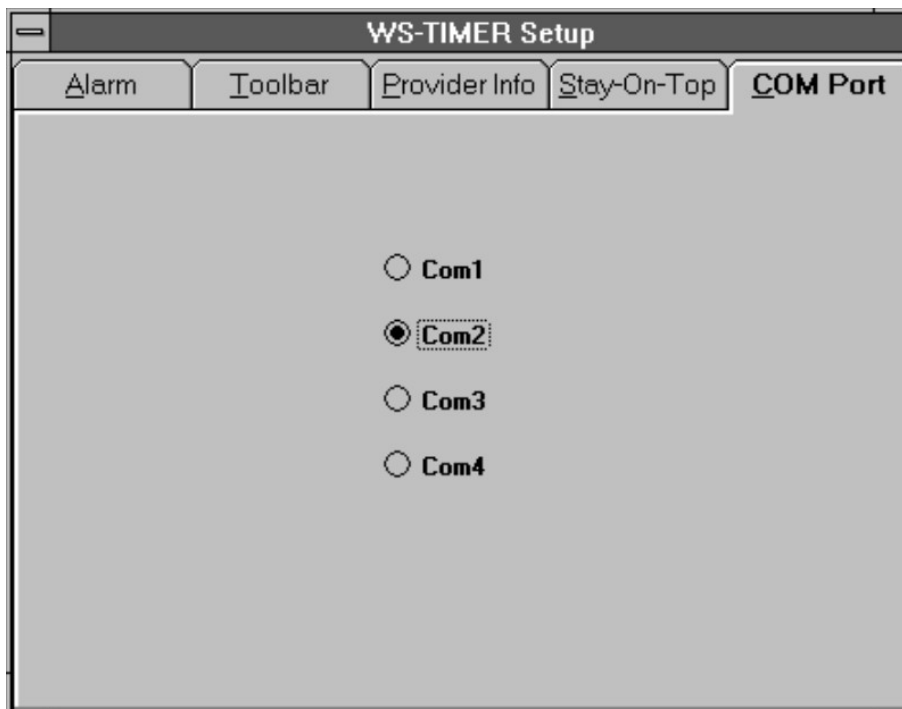
Period: this will display your accumulated time for the current period.

None: no topmost window will be displayed and accumulated times can only be seen from WS-TIMER's main window.



COM Port

The information here is straight forward. Just click on the appropriate COM port you want WS-TIMER to monitor.

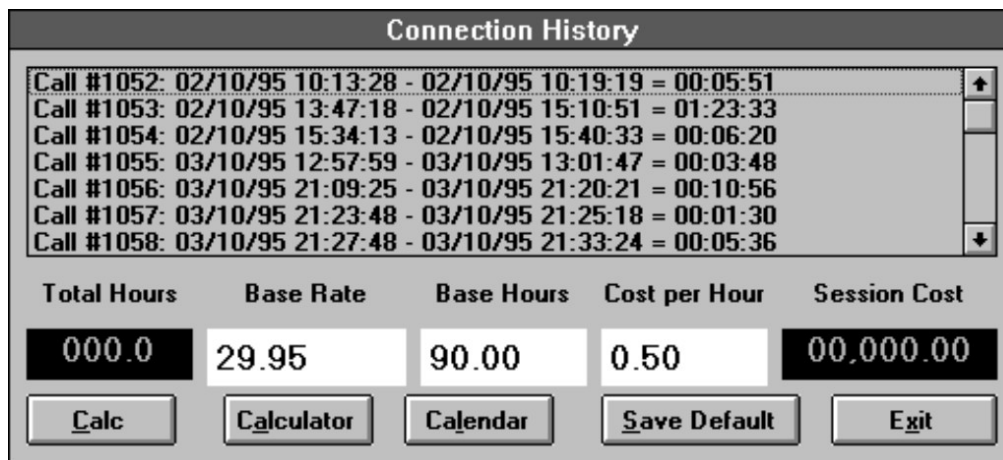


Other Options in WS-TIMER

Viewing Log Files

To view the log files, just click on File, View and which log you want to view. While in the log viewing mode, you can perform calculations on any part of the log. Just follow these simple steps.

1. Click on the first event you want to include in your session calculation. Now press and hold the shift key and click on the last event you want to include. This will highlight all events between from the first to the last that you choosed.
2. Enter your base rate. For example: with my provider I have a base rate of 29.95 per month which includes 90 hours and then I pay \$0.50 per hour for any hour after that. So I enter 29.95 in the base rate, 90 hours in the base hours, and 0.50 in the cost per hour.
3. Enter the number of base hours in the appropriate box. These base hours can be any hours that are part of a flat rate and not calculated in the cost of extra hours.
4. Enter the cost per hour in the appropriate box.
5. Click on the Calc box and the total time, total hours, and session cost will be calculated for you.



The screenshot shows a window titled "Connection History" with a list of call records and a summary table below. The call records are as follows:

Call #	Start Time	End Time	Duration
Call #1052	02/10/95 10:13:28	02/10/95 10:19:19	00:05:51
Call #1053	02/10/95 13:47:18	02/10/95 15:10:51	01:23:33
Call #1054	02/10/95 15:34:13	02/10/95 15:40:33	00:06:20
Call #1055	03/10/95 12:57:59	03/10/95 13:01:47	00:03:48
Call #1056	03/10/95 21:09:25	03/10/95 21:20:21	00:10:56
Call #1057	03/10/95 21:23:48	03/10/95 21:25:18	00:01:30
Call #1058	03/10/95 21:27:48	03/10/95 21:33:24	00:05:36

Below the list is a summary table with the following data:

Total Hours	Base Rate	Base Hours	Cost per Hour	Session Cost
000.0	29.95	90.00	0.50	00,000.00

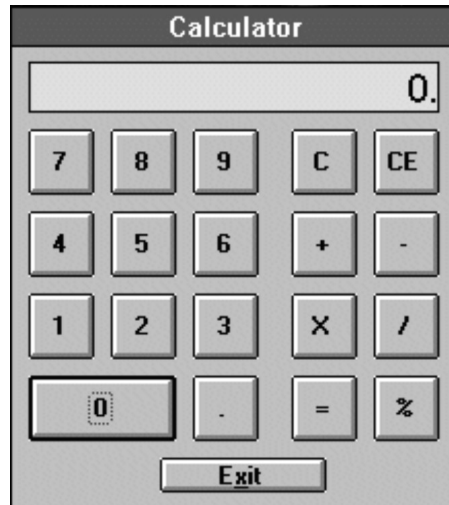
At the bottom of the window are five buttons: Calc, Calculator, Calendar, Save Default, and Exit.

In this example the fields iwhite with black letters are your variables required to perform the calculation. The other two blank field are those calculated when you press Calc.

Utilities

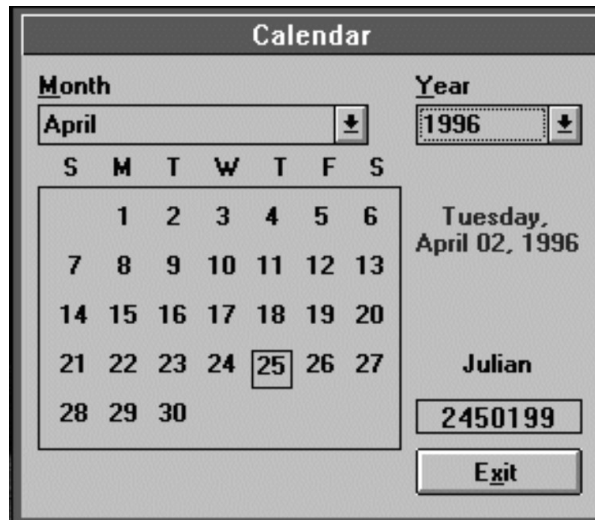
Calculator

You can launch the calculator from the main screen menu or from the Log Viewer. This comes handy while performing calculations on your logs.



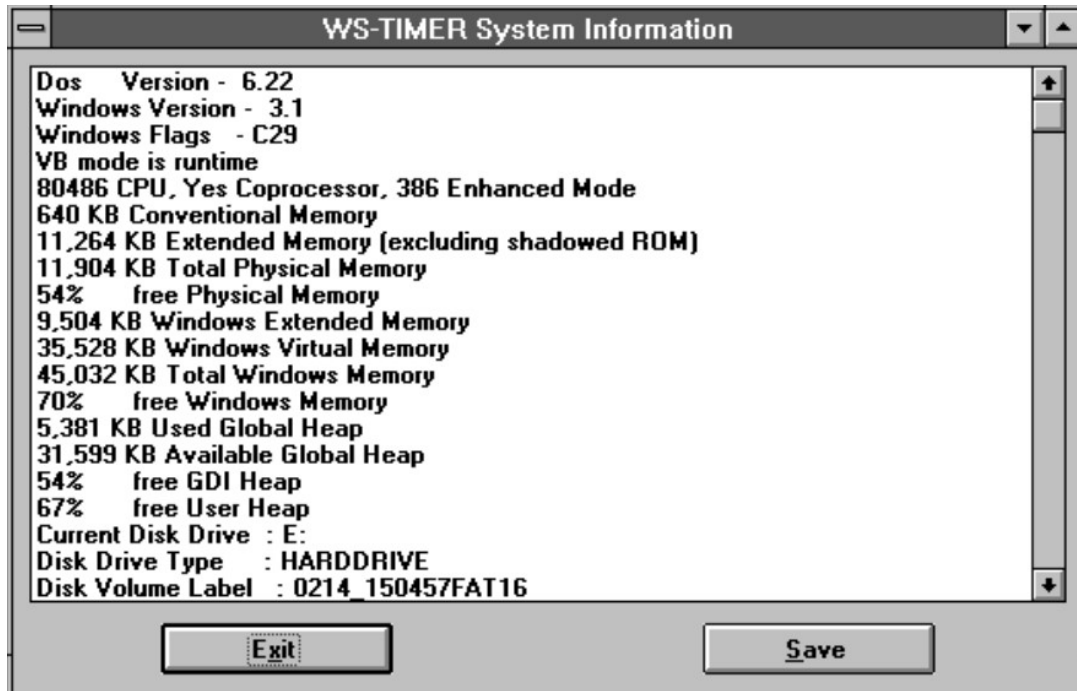
Calendar

Like the calculator the calendar can be launched from the main window or the Log Viewer.



System Info

The System Info can help us help you figure out some potential problems you may be having with WS-TIMER. When you click on Save a plain ASCII file will be created in your WS-TIMER directory with the name SYSTEM.TXT.



Register your Version:

Once that you pay your registration fee for WS-TIMER you will be sent a registration code. To enter your registration code just click on the About menu from the main screen's menu and the About box will be displayed. Click on the Register button and you will be prompted for your user name and followed with a prompt for your registration code. Enter the code you were sent by E-Mail.

